

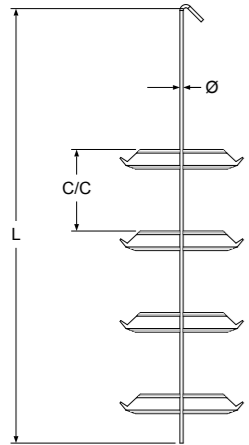
A woman with short dark hair, smiling, is holding a long metal rod with several small components attached. She is wearing a dark polo shirt with the 'hangOn' logo on the sleeve. The background is a factory setting with various metal parts and machinery. The entire image has a green color overlay.

hang[®]
On

SMART SOLUTIONS

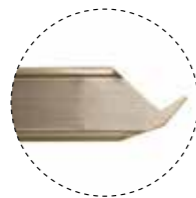
FOR INDUSTRIAL COATING

HANGING QUICK SYSTEM, HQS



Prod No.	Qty per box	No. of hanging points	Description
HQS 800X100X4 PA	90	8	HQS-shaft L=800 Ø4,0 c/c=100 plane form A
HQS 800X100X4 90A	90	8	HQS-shaft L=800 Ø4,0 c/c=100 90° form A
HQS 800X200X4 PA	90	6	HQS-shaft L=800 Ø4,0 c/c=200 plane form A
HQS 800X200X4 90A	90	6	HQS-shaft L=800 Ø4,0 c/c=200 90° form A
HQS 1000X100X4 PA	90	10	HQS-shaft L=1000 Ø4,0 c/c=100 plane form A
HQS 1000X100X4 90A	90	10	HQS-shaft L=1000 Ø4,0 c/c=100 90° form A
HQS 1000X200X4 PA	90	6	HQS-shaft L=1000 Ø4,0 c/c=200 plane form A
HQS 1000X200X4 90A	90	6	HQS-shaft L=1000 Ø4,0 c/c=200 90° form A
HQS 1200X100X4 PA	80	14	HQS-shaft L=1200 Ø4,0 c/c=100 plane form A
HQS 1200X100X4 90A	80	14	HQS-shaft L=1200 Ø4,0 c/c=100 90° form A
HQS 1200X100X4 PAS	150	7	HQS-shaft L=1200 Ø4,0 c/c=100 plane form AS
HQS 1200X100X4 90AS	150	7	HQS-shaft L=1200 Ø4,0 c/c=100 90° form AS
HQS 1200X100X4 PC	80	14	HQS-shaft L=1200 Ø4,0 c/c=100 plane form C
HQS 1200X100X4 90C	80	14	HQS-shaft L=1200 Ø4,0 c/c=100 90° form C
HQS 1200X100X4 PD	90	14	HQS-shaft L=1200 Ø4,0 c/c=100 plane form D
HQS 1200X100X4 90D	90	14	HQS-shaft L=1200 Ø4,0 c/c=100 90° form D
HQS 1200X100X4 PE	80	14	HQS-shaft L=1200 Ø4,0 c/c=100 plane form E
HQS 1200X100X4 90E	80	14	HQS-shaft L=1200 Ø4,0 c/c=100 90° form E
HQS 1200X200X4 PA	80	8	HQS-shaft L=1200 Ø4,0 c/c=200 plane form A
HQS 1200X200X4 90A	80	8	HQS-shaft L=1200 Ø4,0 c/c=200 90° form A

- » Fast, 3 times faster than chain hanging
- » Simple, quick start up
- » Strong, up to 100 kg per shaft (HQS)
- » Easy adaptable, lengths 400-2400 mm
- » Small hanging points
- » See more info at www.hangon.com



Form A & AS



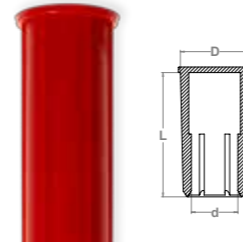
Form C



Form D



Form E



CAPS, GAQ



Prod No.	Qty per box	Fits	d, mm	D, mm	L, mm	Colour
GAQ M3X15	1000	M3	2,8	5,8	15,4	●
GAQ M4X20	1000	M4	3,8	7,1	20,4	○
GAQ M5X25	1000	M5	4,7	8,3	25,4	●
GAQ M6X30	500	M6	5,7	9,6	30,4	●
GAQ M8X35	500	M8	7,6	12,1	35,4	●
GAQ M10X40	200	M10	9,4	14,6	40,4	○
GAQ M12X40	200	M12	11,3	17,2	40,4	●
GAQ M14X40	100	M14	13,2	19,7	40,4	●
GAQ M16X40	100	M16	15,1	22,2	40,4	●

- » Quick, 2 times faster handling compared to standard cap GA
- » Cost efficient
- » Ventilated, do not blow off in the curing oven

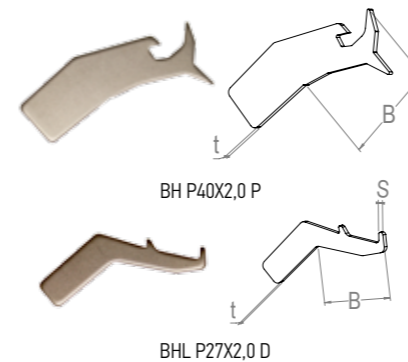


GA



GAQ

ARROW INSERTS BH/BHL

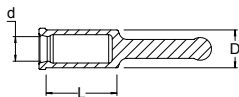


BH P40X2,0 P

BHL P27X2,0 D

Prod No.	Qty per box	B, mm	S, mm	t, mm	Hanging system
BH P40X2,0 P	1000	33,7		2,0	Hanging system BH
BHL P27X2,0 D	1000	26,2	1,7	2,0	Hanging system BHL

- » Inserts specialized for aluminium profiles



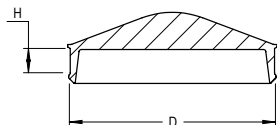
METRIC HOLLOW CYLINDRICAL PULL PLUGS (new size)



Prod No.	Qty per box	D, mm	L, mm	d, mm	Colour
GDM 46X60 H	10	46	60	39,8	Yellow

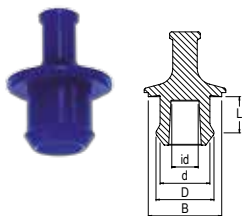
» For more info and sizes, see HangOn product handbook #11, page 117

SHALLOW HOLE PLUGS (new sizes)



Prod No.	Qty per box	D, mm	H, mm	Colour
GBH 30X10	100	32	10	Yellow
GBH 55X10	50	57	10	Blue
GBH 65X10	25	67	10	Pink
GBH 75X10	25	77	10	Orange
GBH 85X10	20	87	10	Red
GBH 90X10	20	92	10	Grey
GBH 95X10	20	97	10	Yellow
GBH 100X15	10	102	15	Orange
GBH 110X15	10	112	15	Grey

» For more info and sizes, see HangOn product handbook #11, page 117

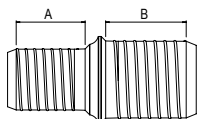


FLANGED PLUGS (new sizes)



Prod No.	Qty per box	B, mm	D, mm	d, mm	id, mm	L, mm	Colour
GKW 08X20	500	20	7,4	6,8	2,3	5,3	Yellow
GKW 08X25	500	25	7,4	6,8	2,3	5,3	Yellow

» For more info and sizes, see HangOn product handbook #11, page 120



METRIC THREADED PLUGS (new size)



Prod No.	Qty per box	Fits	A, mm	B, mm	Colour
GTM 0810	1000	M8/M10	10	12	Brown

» For more info and sizes, see HangOn product handbook #11, page 121