

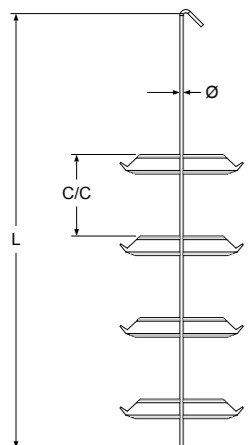


hang[®]
On

SMART SOLUTIONS

FOR INDUSTRIAL COATING

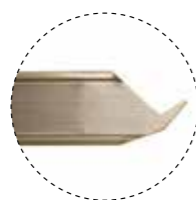
HANGING QUICK SYSTEM, HQS



Art. nr.	Antal/kart.	Antal hängpunkter	Beskrivning
HQS 800X100X4 PA	90	8	HQS-skaft L=800 Ø4,0 c/c=100 plane form A
HQS 800X100X4 90A	90	8	HQS-skaft L=800 Ø4,0 c/c=100 90° form A
HQS 800X200X4 PA	90	6	HQS-skaft L=800 Ø4,0 c/c=200 plane form A
HQS 800X200X4 90A	90	6	HQS-skaft L=800 Ø4,0 c/c=200 90° form A
HQS 1000X100X4 PA	90	10	HQS-skaft L=1000 Ø4,0 c/c=100 plane form A
HQS 1000X100X4 90A	90	10	HQS-skaft L=1000 Ø4,0 c/c=100 90° form A
HQS 1000X200X4 PA	90	6	HQS-skaft L=1000 Ø4,0 c/c=200 plane form A
HQS 1000X200X4 90A	90	6	HQS-skaft L=1000 Ø4,0 c/c=200 90° form A
HQS 1200X100X4 PA	80	14	HQS-skaft L=1200 Ø4,0 c/c=100 plane form A
HQS 1200X100X4 90A	80	14	HQS-skaft L=1200 Ø4,0 c/c=100 90° form A
HQS 1200X100X4 PAS	150	7	HQS-skaft L=1200 Ø4,0 c/c=100 plane form AS
HQS 1200X100X4 90AS	150	7	HQS-skaft L=1200 Ø4,0 c/c=100 90° form AS
HQS 1200X100X4 PC	80	14	HQS-skaft L=1200 Ø4,0 c/c=100 plane form C
HQS 1200X100X4 90C	80	14	HQS-skaft L=1200 Ø4,0 c/c=100 90° form C
HQS 1200X100X4 PD	90	14	HQS-skaft L=1200 Ø4,0 c/c=100 plane form D
HQS 1200X100X4 90D	90	14	HQS-skaft L=1200 Ø4,0 c/c=100 90° form D
HQS 1200X100X4 PE	80	14	HQS-skaft L=1200 Ø4,0 c/c=100 plane form E
HQS 1200X100X4 90E	80	14	HQS-skaft L=1200 Ø4,0 c/c=100 90° form E
HQS 1200X200X4 PA	80	8	HQS-skaft L=1200 Ø4,0 c/c=200 plane form A
HQS 1200X200X4 90A	80	8	HQS-skaft L=1200 Ø4,0 c/c=200 90° form A



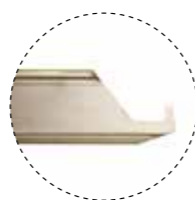
- » Snabb, 3 gånger snabbare än kedjehängning
- » Enkel att komma igång med
- » Stark, total maxbelastning upp till 100 kg
- » Anpassningsbar, längder 400-2400 mm
- » Minimala hängmärken
- » För mer info www.hangon.com



Form A & AS



Form C

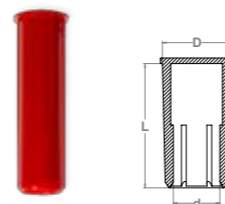


Form D



Form E

AXELMASKERINGAR, GAQ



Art. nr.	Antal/kart.	Passar till	d, mm	D, mm	L, mm	Färg
GAQ M3X15	1000	M3	2,8	5,8	15,4	●
GAQ M4X20	1000	M4	3,8	7,1	20,4	○
GAQ M5X25	1000	M5	4,7	8,3	25,4	●
GAQ M6X30	500	M6	5,7	9,6	30,4	●
GAQ M8X35	250	M8	7,6	12,1	35,4	●
GAQ M10X40	200	M10	9,4	14,6	40,4	●
GAQ M12X40	200	M12	11,3	17,2	40,4	●
GAQ M14X40	100	M14	13,2	19,7	40,4	●
GAQ M16X40	100	M16	15,1	22,2	40,4	●

- » Snabb, 2 ggr snabbare hantering jmf med standardmaskering GA
- » Kostnadseffektiv
- » Innesluten luft kan lätt ventileras

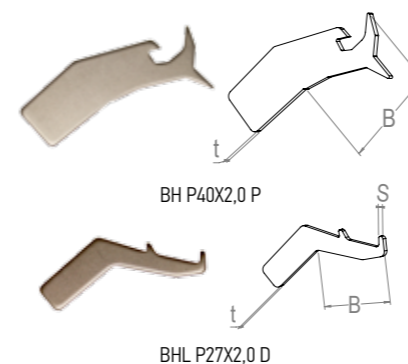


GA



GAQ

PILAR BH/BHL

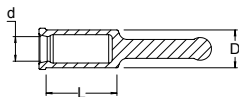


BH P40X2,0 P

BHL P27X2,0 D

Art. nr.	Antal/kart.	B, mm	S, mm	t, mm	Hängsystem
BH P40X2,0 P	1000	33,7		2,0	Hängsystem BH
BHL P27X2,0 D	1000	26,2	1,7	2,0	Hängsystem BHL

- » Utbytesdetaljer anpassade för aluminiumprofiler



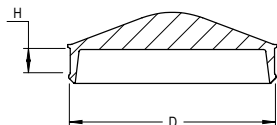
IHÅLIG METRISK DRAGPLUGG (ny storlek)



Art. nr.	Antal/kart.	D, mm	L, mm	d, mm	Färg
GDM 46X60 H	10	46	60	39,8	■

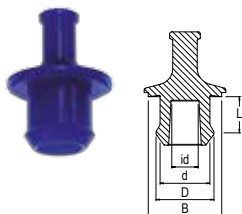
» För mer info och fler storlekar, se HangOn produkthandbok #11 sid 117

STORHÅLSPLUGGAR (nya storlekar)



Art. nr.	Antal/kart.	D, mm	H, mm	Färg
GBH 30X10	100	32	10	■
GBH 55X10	50	57	10	■
GBH 65X10	25	67	10	■
GBH 75X10	25	77	10	■
GBH 85X10	20	87	10	■
GBH 90X10	20	92	10	■
GBH 95X10	20	97	10	■
GBH 100X15	10	102	15	■
GBH 110X15	10	112	15	■

» För mer info och fler storlekar, se HangOn produkthandbok #11 sid 117

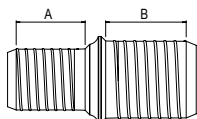


HÅLPLUGGAR MED FLÄNS (nya storlekar)



Art. nr.	Antal/kart.	B, mm	D, mm	d, mm	id, mm	L, mm	Färg
GKW 08X20	500	20	7,4	6,8	2,3	5,3	■
GKW 08X25	500	25	7,4	6,8	2,3	5,3	■

» För mer info och fler storlekar, se HangOn produkthandbok #11 sid 120



GÄNGADE METRISKA PLUGGAR (ny storlek)



Art. nr.	Antal/kart.	Passar till	A, mm	B, mm	Färg
GTM 0810	1000	M8/M10	10	12	■

» För mer info och fler storlekar, se HangOn produkthandbok #11 sid 121